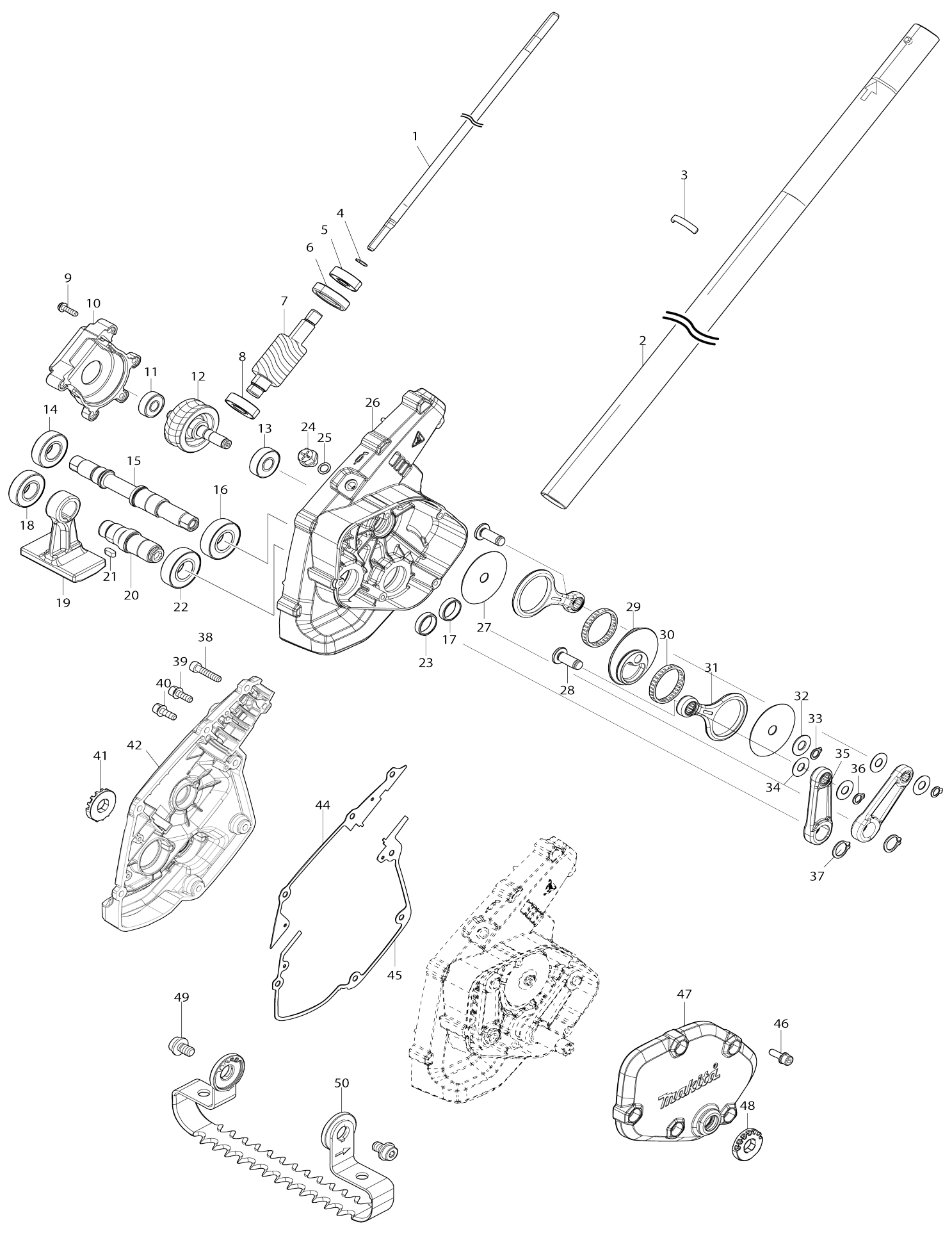


Model No.WA400MP WEEDING ATTACHMENT



Model No.WA400MP WEEDING ATTACHMENT

Item No.	Parts No.	Description	Interchangability	Q'ty	New/Old	Note1	Note2
001	327C90-9	SHAFT 7		1			
002	141T80-8	SHAFT PIPE COMPLETE B		1			
C10	819312-8	MAKITA LOGO LABEL		1			
C20	8141E9-5	CAUTION LABEL		1			
003	814A82-0	DATE CODE LABEL		1			
004	961003-8	RETAINING RING S-7		1			
005	210059-1	BALL BEARING 6000DDW		1			
006	422B00-6	RUBBER CAP 26		1			
007	227B14-8	WORM GEAR		1			
008	211131-2	BALL BEARING 6001DDW		1			
009	911128-8	P.H.SCREW M4X16 WITH WR		5			
010	413W24-9	GEAR CASE COVER		1			
011	211032-4	BALL BEARING 608ZZ		1			
012	141T73-5	WORM WHEEL 20 COMPLETE		1			
013	210059-1	BALL BEARING 6000DDW		1			
014	211243-1	BALL BEARING 6002ZZ		1			
015	327C88-6	SPINDLE C		1			
016	211251-2	BALL BEARING 6003LLB		1			
017	257312-4	RING17		1			
018	211243-1	BALL BEARING 6002ZZ		1			
019	313494-3	WEIGHT		1			
020	327C89-4	SPINDLE D		1			
021	254239-9	KEY 4		1			
022	211251-2	BALL BEARING 6003LLB		1			
023	257312-4	RING17		1			
024	265590-2	+HEX.BOLT M8X10 WITH R		1			
025	213030-4	O RING 8		1			
026	141T77-7	HOUSING L COMPLETE		1			
027	347B98-1	PLATE		2			
028	327C87-8	SPINDLE B		2			
029	327C91-7	CRANK		1			
030	212229-8	NEEDLE CAGE 315		2			
031	141T78-5	CONNECTING ROD A COMPLETE		2			
032	267237-4	FLAT WASHER 9		1			
033	961004-6	RETAINING RING (EXT) S-8		1			
034	253139-0	FLAT WASHER 8		4			
035	141T79-3	CONNECTING ROD B COMPLETE		2			
036	961004-6	RETAINING RING (EXT) S-8		2			
037	961054-1	RETAINING RING S-14		2			
038	922242-5	HEX. SOCKET HEAD BOLT M5X25		2			
039	922223-9	H.S.H.BOLT M5X16 WITH WR		1			
040	922223-9	H.S.H.BOLT M5X16 WITH WR		6			
041	313509-6	ADJUST PLATE A		1			
042	137066-8	HOUSING R COMPLETE ASSY		1			
C10	263005-3	RUBBER PIN 6		3			
044	422B39-9	GASKET B		1			
045	422B38-1	GASKET A		1			

046	922223-9	H.S.H.BOLT M5X16 WITH WR		5		
047	141T76-9	HOUSING L COVER COMPLETE		1		
048	313509-6	ADJUST PLATE A		1		
049	266270-3	HEX.SOCKET HEAD BOLT M8X14		2	*	
049-1	265E04-1	H.S HEX. HD BOLT M6X145 WITH R	S	1		
050	1913L5-4	WEEDING BLADE 220 SET		1	*	
C10	122F88-7	BLADE COVER ASSEMBLY 220		1	*	
050-1	1913L5-4	WEEDING BLADE 220 SET	S	1		
C10	122F88-7	BLADE COVER ASSEMBLY 220		1		
A01	424434-7	CAP 24		1		
A02	783217-7	HEX. WRENCH 5		1	*	
A02-1	783216-9	HEX. WRENCH 5	<	1		
F01	1913P8-6	WEEDING ATTACHMENT B SET		1		
F02	1913L6-2	WEEDING BLADE 80 SET		1	*	
F02-1	1913L6-2	WEEDING BLADE 80 SET	S	1		
F03	1913L7-0	CULTIVATOR BLADE 170 SET		1	*	
F03-1	1913L7-0	CULTIVATOR BLADE 170 SET	S	1		
F04	1913L5-4	WEEDING BLADE 220 SET		1	*	
F04-1	1913L5-4	WEEDING BLADE 220 SET	S	1		

Please state Parts No. when your order.

Print Date 09/30/2024